

LOS
ANGELES
LGBT
CENTER

EVERGREEN ENGAGEMENT OPPORTUNITIES

2026



FOOD SECURITY PROGRAMS

The Los Angeles LGBT Center's Food Security Programs provide free, nutritious food and essential items to low-income LGBTQ+ individuals and families across Los Angeles. Through weekly hot lunches, monthly community markets, and pantry distributions, these programs help combat food insecurity while fostering dignity, connection, and community care.



SENIOR PRIDE PANTRY

SENIOR PANTRY PROVIDES FREE FOOD AND ESSENTIAL ITEMS to low-income seniors—both housed and unhoused—across LA County. Volunteers support by assembling care bags, portioning supplies, and organizing pantry shelves.

1111 N. Las Palmas Ave., Los Angeles, CA 90038

Volunteer shifts available Tuesdays, 9:15 a.m.–11:00 a.m.

(Capacity: 3–5)



SENIOR LUNCH

THE CENTER'S SENIOR SERVICES TEAM SERVES HOT LUNCHES, prepared by our Culinary Arts program, to low-income LGBTQ+ seniors every weekday. Volunteers assist with the lunch service by serving meals, preparing beverages and place settings, and supporting staff at the Harry and Jeanette Weinberg Senior Center in Hollywood.

1118 N. McCadden Pl., Los Angeles, CA 90038

Volunteer shifts available Monday–Friday, 11:30 a.m.–1:30 p.m.

(Capacity: 3–5)



MARKET DAYS

HOLLYWOOD & SOUTH LOS ANGELES

Help nourish and connect with neighbors through our monthly community markets in South LA and Hollywood. Volunteers run everything from fresh produce distribution to wellness support.

BAYARD RUSTIN PLAZA - HOLLYWOOD

1118 N. McCadden Pl., Los Angeles, CA 90038

First Wednesday of each month, 11:00 a.m.–1:00 p.m.

Fresh produce only

(Capacity: 3)

CENTER SOUTH - SOUTH LOS ANGELES

2313 W. Martin Luther King Jr. Blvd., Los Angeles, CA 90008

Fourth Friday of each month, 10:00 a.m.–2:00 p.m.

Fresh produce, clothing, HIV/STI testing, health screenings, and other services

(Capacity: 8)

ESSENTIALS FOR EQUITY PROGRAMS

Essentials for Equity Programs provide tangible support to LGBTQ+ youth, seniors, and community members by ensuring access to essential, everyday items. Through donation drives, closet organization, and assembling care kits, volunteers and partners help meet immediate needs with dignity—fostering equity, stability, and well-being across all Center programs.



CLOSET ORGANIZATION

THE CENTER OFFERS RESOURCE CLOSETS FOR UNHOUSED LGBTQ+ YOUTH ages 18 to 24, providing essentials like hygiene kits and gender-affirming clothing. Volunteers help sort and organize inventory to ensure these vital items reach those who need them most.

Donation Station | Youth Casual-Wear Closet | Youth Professional Wear Closet | Rainbow Boutique

1118 N. McCadden Pl., Los Angeles, CA 90038

Volunteer shifts available Monday–Friday (1- to 2-hour increments, scheduled in advance)

(Capacity: 5)

DONATION DRIVES

HOSTING DRIVES FOR CLOTHING, HYGIENE ITEMS, PANTRY GOODS, AND AFFIRMING PRODUCTS like makeup is a meaningful way for offsite groups to support the Center’s youth, seniors, and vulnerable community members. These donations strengthen programs across the Center and help clients feel seen, supported, and empowered as they work toward long-term goals such as housing, employment, and stability.

Please coordinate a drop-off date and time in advance.

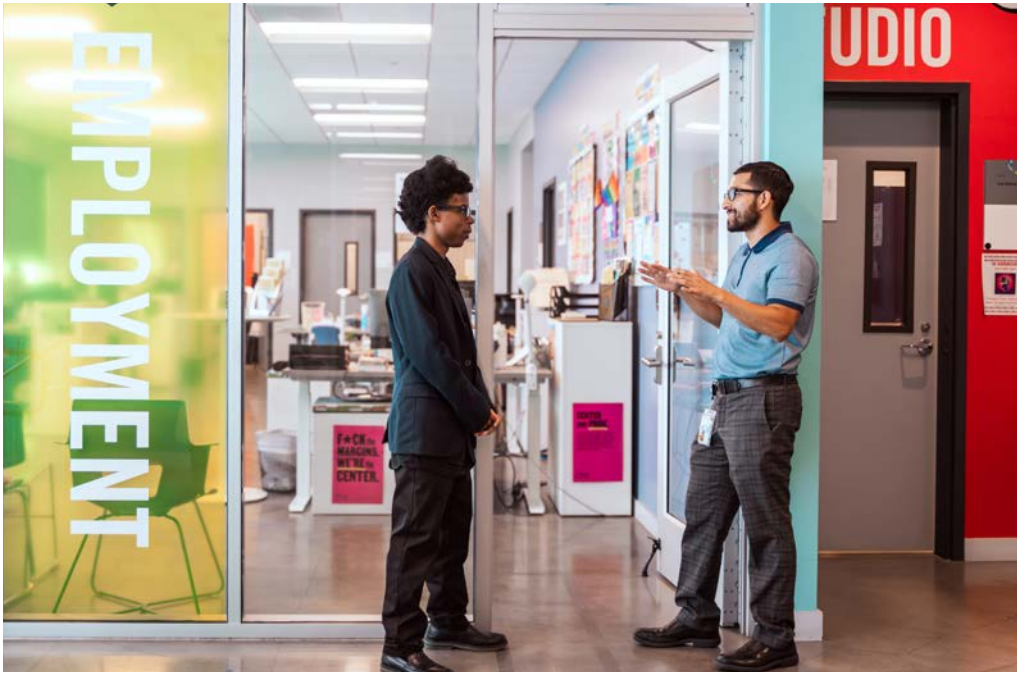
ESSENTIAL CARE KITS

SUPPORT LGBTQ+ SENIORS AND YOUTH by assembling Essential Care Kits within your own workspace. These kits—typically assembled in batches of 150—include a range of necessities that promote comfort, wellness, and dignity. Amazon Wishlists for both [seniors](#) and [youth](#) are available to guide your purchasing.

Please coordinate a drop-off date and time in advance.

FUTURE FORWARD PROGRAMS

Future Forward Programs empower LGBTQ+ youth through career exploration, skill-building, and creative engagement. This series includes Youth Employment Panels, Career Development Workshops, and customizable Partner Spotlight Activations — giving partners the opportunity to share their expertise in ways that are hands-on, collaborative, and affirming. From resume tips to makeup tutorials, each session helps young people gain confidence, explore career paths, and connect with professionals who reflect and uplift their identities.



WORKFORCE DEVELOPMENT SERIES

YOUTH EMPLOYMENT PANEL

Volunteers share their career journeys with LGBTQ+ youth (ages 18–24), offering insight into diverse and underrepresented paths. These panels expand what youth see as possible in their professional futures.

CAREER DEVELOPMENT WORKSHOP

Interactive sessions that help youth build essential skills like resume building, cover letters, and interview prep. Visual tools like PowerPoint are encouraged to keep content engaging and accessible.

1118 N. McCadden Pl., Los Angeles, CA 90038

Panels & workshops occur Fridays at 2:00 p.m. (45 min. discussion and 15 min. Q&A)

(Capacity: 1–5)



PARTNER SPOTLIGHT ACTIVATION

WE INVITE PARTNERS TO COLLABORATE with us on custom engagements and workshops. You'll work directly with our clients and community members, witnessing firsthand the impact of your support.

Examples include experiential pop-ups and workshops/masterclasses such as floral arranging, get-ready-with-us sessions, financial literacy, game nights, garment fittings, language seminars, and more.

MEDIA COVERAGE

To ensure a seamless and meaningful experience, we kindly request your cooperation with our media approval process. All media coverage, including photography, videography, interviews, and social media, should be arranged, and approved prior to arriving for the engagement. Same day accommodations cannot be made. If you intend to capture content during your visit, please reach out to Lono Willis, Corporate & Institutional Partnerships Officer at lono.willis@lalgbtcenter.org to make the arrangements.

PRIMARY CONTACT

LONO WILLIS

(he/him)

CORPORATE & INSTITUTIONAL PARTNERSHIPS OFFICER

lono.willis@lalgbtcenter.org
213 466-5200

